

# PRODUCT PORTFOLIO

Smart Batteries and Accessories



Worldwide Approvals

Highest Performance

No Obsolescence

Highest Quality

Time-to-Market

Maximum Safety

No NRE

Design-In Support

Independent of Quantity

Extensive Accessories

## POWERPAQ<sub>s</sub>

RRC2020	RRC2024	RRC2037	RRC2040
3S3P	4S3P	2S1P	3S1P
11.25V	14.40V	7.20V	11.25V
8.85Ah	6.60Ah	2.90Ah	2.95Ah
10.00A discharge	10.00A discharge	4.50A discharge	3.00A discharge
99.60Wh	95.00Wh	20.90Wh	33.20Wh



RRC2040-2	RRC2054	RRC2054-2	RRC2057
3S2P	4S1P	4S2P	2S2P
10.80V	14.40V	14.40V	7.20V
6.90Ah	3.45Ah	6.90Ah	6.90Ah
7.50A discharge	5.00A discharge	10.00A discharge	9.50A discharge
74.52Wh	49.70Wh	99.40Wh	49.70Wh



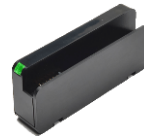
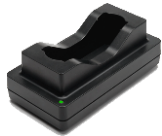
## FLATPAQ<sub>s</sub>

RRC1120	RRC1130	RRC2130	RRC2140
1S1P	1S1P	2S1P	3S1P
3.70V	3.80V	7.60V	11.40V
2.00Ah	3.88Ah	3.88Ah	3.88Ah
2.00A discharge	3.00A discharge	5.67A discharge	5.67A discharge
7.40Wh	14.70Wh	29.50Wh	44.20Wh



## Accessories: Standard Battery Chargers

RRC-SMB-MBC	RRC-SMB-UBC	RRC-SMB-DBC	RRC-SMB-FPC	RRC-SCC1120	RRC-SCC1130
Battery charger	Battery charger /conditioner	Dual bay battery charger/conditioner	Battery charger	Battery charger	Battery charger
50W charge power	65W charge power	30W charge power per bay	40W charge power	5W charge power	5W charge power
AC power supply incl.	AC power supply incl.	AC power supply incl.	AC power supply incl.	Micro-USB, AC power supply incl.	Micro-USB, AC power supply incl.
For RRC204x and RRC205x	For RRC20xx	For RRC20xx	For RRC21xx	For RRC1120	For RRC1130



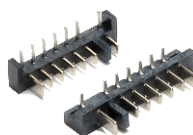
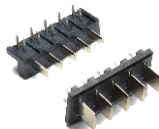
## Accessories: Power Supplies AC/DC and & Car Adapters DC/DC

PS65	PS65M	PS90M	RRC-SMB-CAR	CAR70M	CAR120A
Compatible with industrial devices	Compatible with medical devices	Compatible with medical devices	Compatible with RRC-SMB-MBC, RRC-SMB-UBC, RRC-SMB-FTP	Compatible with medical devices	Compatible with mobile devices
65W	65W	90W	85W + 5W USB	70W	120W
Input 100 – 240VAC Output 19VDC	Input 100 – 240VAC Output 19VDC	Input 100 – 240VAC Output 24VDC	Input 11 – 32VDC Output 24VDC	Input 10 – 32VDC Output 16 – 19VDC	Input 11 – 32VDC Output 5 – 24VDC



## Accessories: Power Management, Battery Mating Connectors and Design-In Tool

RRC-PMM240	RRC-MC-20-Series	RRC-MC-21-Series	RRC-MC-11-Series	SMBus-Reader
Power Management Module	Battery mating connectors	Battery mating connectors	Battery mating connectors	Battery diagnostic tool
For RRC20xx	Compatible with RRC20xx	Compatible with RRC21xx	Compatible with RRC11xx	Compatible with RRC20xx



### Germany/Headquarters

RRC power solutions GmbH  
Technologiepark 1  
66424 Homburg / Saar

Tel.: +49 6841 98090  
Fax: +49 6841 9809280  
Email: sales@rrc-ps.de  
Web: www.rrc-ps.de

### USA

RRC power solutions Inc.  
18340 Yorba Linda Blvd.,  
# 107-437 Yorba Linda,  
CA 92886-4104

Tel.: +1 714 777 3604  
Fax: +1 714 777 3658  
Email: usa@rrc-ps.com  
Web: www.rrc-ps.com

### Hong Kong

RRC power solutions Ltd.  
S-V,6/F, Valiant Industrial  
Centre 2-12 Au Pui Wan Street  
Fo Tan, N.T., Hong Kong

Tel.: +852 2376 0106  
Fax: +852 2375 0107  
Email: hkrrc@rrc-ps.cn  
Web: www.rrc-ps.com

### China

RRC power solutions Ltd.  
Room 1306, C Building,  
Tianan International building,  
Renmin South Road, Luohu  
District, Shenzhen 518021

Tel.: +86 755 8374 1908  
Fax: +86 755 8374 1861  
Email: hkrrc@rrc-ps.cn  
Web: www.rrc-ps.com



Sager Electronics and its specialized group Sager Power Systems is an authorized distributor of RRC Power Solutions.

Visit RRC Power Solutions online on [power.sager.com](http://power.sager.com). For price and availability, or to speak to a technical resource, contact a Sager Power Systems representative at 1.866.588.1750 or [power@sager.com](mailto:power@sager.com).